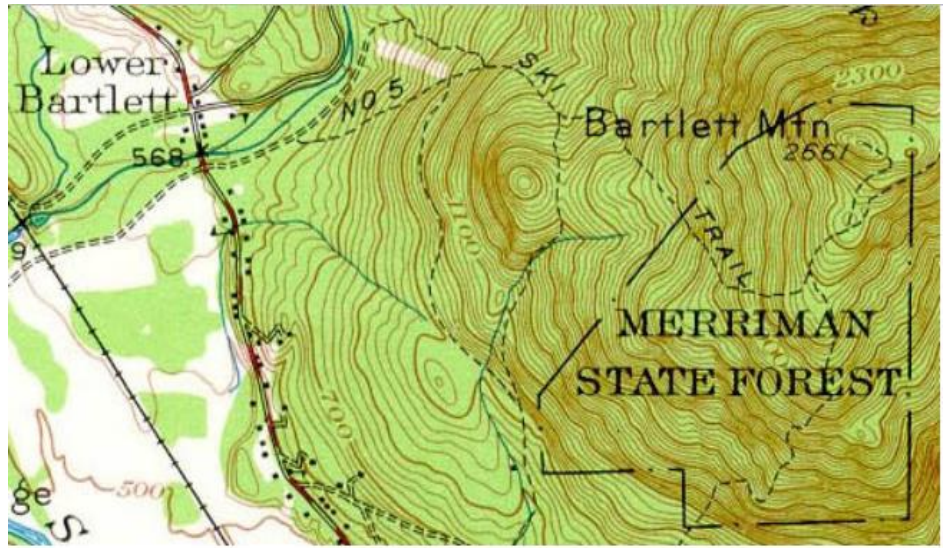
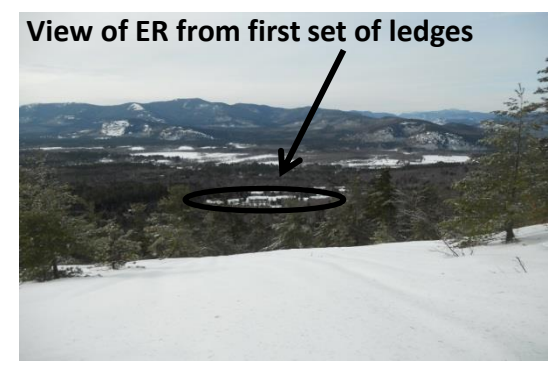
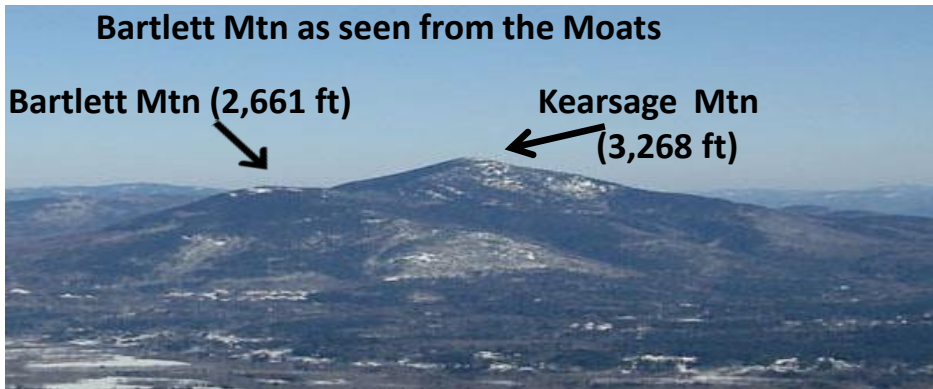


# Bartlett Mountain (Eagle Ridge's Backyard)

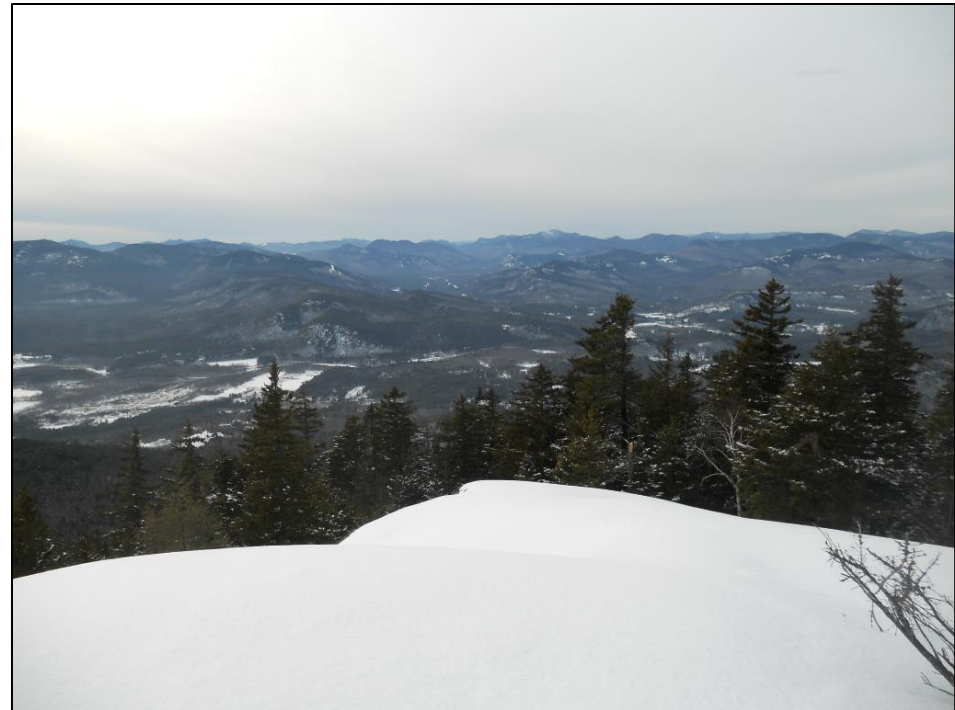


- **History** - A sub-peak of Kearsarge North Mountain, Bartlett Mountain once featured multiple hiking trails and an alpine ski trail.
- **Location** – Merriman State Forest – marked by yellow blazes
- **Height** – 2,661 feet
- **Difficulty** – moderate
- **Time from Eagle Ridge** – 3 hours round trip (less if you are an advanced hiker)
- **Trail description** – start behind the pond where you see a grassy path into the woods. Go past the second set of large rocks. Take your second right into the woods (the first right is a small walk to Mt Surprise). This is where the trail to the top of Bartlett Mountain begins.
- Cross a small wooden bridge. Look for an old worn out Merriman State Forest sign. The trail goes up steep past some huge boulders. Look for yellow blazes on the trees. The trail then follows a dried out water bed.
- The first ledge is reached in about 30 minutes and offers a great view of the valley and the condos down below. This is about ¼ of the way to the top.
- After the first set of ledges the trail moderates. Eventually it comes to another set of ledges. Take care to look for where the trail re-enters the forest.
- Continue to follow the yellow blazes. It gets tricky in spots so pay attention and look for the blazes and in some places yellow triangles are used.
- Before you get to the top you go thru a hemlock forest and go downhill slightly into a small col. If you pay attention, you will know you are close to the top when you see the summit ledges thru the trees and across the way. There is one final ledge to cross to get to the top.
- The trail to Mt Kearsarge is off to the right at the top of the last set of ledges.
- Continue straight for Bartlett Mt. thru a very short section of woods. Continue to an opening just beyond where you will be rewarded with views to Mt Washington, Carter Notch and even Franconia Ridge (on a clear day).
- Contact Fé (K93) at [fewperry@msn.com](mailto:fewperry@msn.com) if interested in trail work.





# Winter Views - Bartlett Mt



Picture of Bartlett Mountain from the Moats - to show trail to top

